



Beth  
Longwell  
Foundation

# FOUNDATION CONNECTION

Summer 2020

## WELCOME OUR NEWEST SCHOLARSHIP RECIPIENT

We are very pleased to announce Tatiana Taylor as the recipient of the 2020 Beth Longwell Foundation College Scholarship. Tatiana graduated from Palo Alto High School and due to the pandemic, her high school career ended quite differently than our other scholarship recipients.

While in high school, Tatiana participated on the varsity cheer team for four years and it brought her great joy. She was captain her senior year and was thrilled that the cheer team qualified to compete in the United Spirit Association National Competition. Tatiana also made many relationships on the team that helped her through some very difficult times. Around the time she made the cheer team her mother passed away, so cheer was a very good outlet and a safe space. She hopes to continue cheering in college.

Tatiana was also involved in the Black Scholars United Club and has an interest in educational inequality. She has shared these views with her peers since her freshman year. She also volunteered every fall as an instructor and choreographer at a local Little Tikes Cheer Camp and found time to work a weekends job since her junior year. Tatiana has always wanted to attend a four-year college to enhance her education and her dream career is to become an Athletic Academic Advisor. She has a passion for helping others and wants to ensure athletes get a second chance at their dreams. Tatiana feels that educational obstacles shouldn't hinder an athlete's future and with her advice and guidance she will help them attain their goals.

She will be attending California State University at Chico in the fall. She is grateful for the BLF scholarship which was an important factor enabling her to attend college. We wish her a great start!

## BLF and COVID-19

The current health crisis of COVID-19 is teaching us all how illness can have a profound effect on family, the economy, our country, and the world. In a matter of a few months, we had our lives turned upside down. This upheaval is consistent with thoughts, emotions, and adjustments made daily by families affected by cancer. Ellen Levitas and her family went through this 13 years ago when Beth was diagnosed with non-smoking lung cancer. Ten weeks later, Beth succumbed to the disease, leaving a void where there previously had been a daughter, sister, wife, and loving mother of toddler twins. As we strive to quickly find a cure for COVID19, we gain a better understanding of the need to fund organizations that seek cures for diseases that devastate many people.

In light of the current environment, and out of respect for those more susceptible to COVID-19, the Beth Longwell Foundation will unfortunately not be holding a Gala Event in 2020.

Please consider a gift to the Beth Longwell Foundation so that we can continue to fund important research in the fight against lung cancer. Our focus has never been stronger!

As always, we are grateful to all of our supporters. Large or small, EVERY donation makes a difference. Be part of the path we are blazing to help patients and families affected by non-smoking lung cancer. Together, we will move forward toward a better world for all. We look forward to gathering again when we can do so safely!

## Please Donate Today

To make a tax-deductible donation to the foundation, visit us at [www.bethlongwellfoundation.org](http://www.bethlongwellfoundation.org) or mail your check payable to the Beth Longwell Foundation  
P.O. Box 50457 Palo Alto, CA 94303

## FOUNDATION FINANCIALS 2019

Established on September 4, 2007 as a California non-profit, public benefit corporation, the Beth Longwell Foundation is completely run by volunteers. Our board devoted its efforts in 2019 to fundraising and servicing our key initiatives as established in our Mission Statement. The table below summarizes the Foundation's financials and use of your generously donated dollars for 2019.

2019 Financial Summary	
Direct Public Support	\$26,653
Investment Income	\$4,343
Fundraising Event, Net	\$0
<b>Total Income</b>	<b>\$30,996</b>
Operations	\$6,388
Scholarships/Grants	\$31,000
<b>Total Expenses</b>	<b>\$37,388</b>
<b>Net Income</b>	<b>(\$6,392)</b>
Investments -- Unrealized	\$5,503
<b>Total Assets</b>	<b>\$83,018</b>

## UPDATE ON BLF SCHOLARSHIP RECIPIENT LIZ VARELA

Liz was the BLF's very first scholarship recipient. After graduating in 2016 from UC Riverside with a degree in Sociology, she came back to the Bay Area with an eagerness to be a part of an organization that supported underserved communities. She joined The Primary School as a founding School Operations Associate, where she supported the opening of a new school. Last year she transitioned into a new position in the Talent and Recruitment department of the same organization.

Liz has been part of our board for almost three years now. She is excited to continue supporting the Beth Longwell Foundation and giving other first-generation students the opportunity to attend college, just like the Foundation gave her.

## LUCKY 13

BY CLAUDETTE KAYNE

After serving for three years on the Board of the Beth Longwell Foundation, I can assure you that its mission, and passion to achieve that mission, is alive and well. In the thirteen years that I have supported the Beth Longwell Foundation, I have observed so much giving and unselfishness. The Board members are passionate about providing a phenomenal event each year to fund the organizations it supports. That funding is vital to improving our community educationally, emotionally, and medically.



Educationally, the Beth Longwell Foundation provides experiences for children who otherwise would not have the opportunity to participate in a fun, group setting. In addition, funding for a disadvantaged college bound senior has proven successful, as all have graduated, on time, and one former recipient is even on the Board of the Beth Longwell Foundation!

Emotionally, the Beth Longwell Foundation provides support for children who have lost a parent and need that extra care to blossom into well-functioning adults. The mentor program reinforces that support.

Medically, the Beth Longwell Foundation funds VITAL cancer research through the GO2 Lung Cancer Foundation. I hope you will join me in renewing your support of the Beth Longwell Foundation and keep putting Beth's wishes in the forefront.

### Mission Statement

The Beth Levitas Longwell Foundation's mission is to positively impact the lives of children through support of charities and organizations in the areas of childhood education, non-smoking lung cancer research, and grief support for children who have lost a parent.

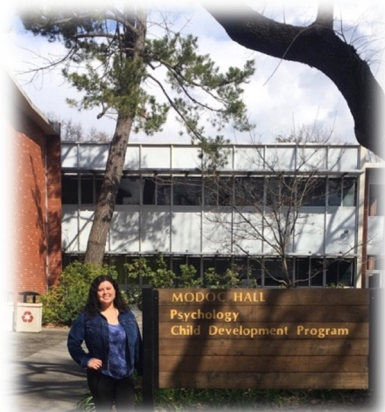
### Board Members

Fran Cohen, Alice Erber, Meridith Herman, Claudette Kayne, Ellen Levitas, Jim Levitas, Robert Longwell, Liz Varela



## UPDATE ON SCHOLARSHIP RECIPIENT CRISTAL ORTIZ-VALENCIA

Cristal was our 2016 scholarship recipient, and will be graduating this fall from Chico State with a degree in Psychology, and a minor in Criminal Justice. She



is excited to share that, due to the support from the BLF, she will be graduating college debt free! Cristal explained, "The day I was offered this scholarship I knew that the BLF saw something special in me, and selected me for a reason. That

reason was to make a difference in the world and to demonstrate to other first-generation college students that it is possible to be the first in your family to graduate from a four-year university, no matter the obstacles you currently face."

Cristal has big plans after graduation. She plans to attend a two-year Master's program in California which will give her the opportunity to become an Elementary school counselor. After a few years of being a counselor, she intends on going back to school to obtain her Ph. D in clinical psychology and start her career as a therapist focusing on mental disorders in children and young adults.

## GRANTEE UPDATE GO<sub>2</sub> FOUNDATION FOR LUNG CANCER

One of the Beth Longwell Foundation's core missions is to support lung cancer research. We specifically fund research addressing lung cancer in younger adults and non-smokers, as Beth was only 39 when she passed away, and was a non-smoker. The GO<sub>2</sub> Foundation for Lung Cancer (formerly the Bonnie J. Addario Lung Cancer Foundation) has been at the forefront of this much-needed research and has been a long-time recipient of grants from the Beth Longwell Foundation. In recent years, BLF grants have helped fund the *Genomics of Young Lung Study (GoYLC)* which was the first-ever, innovative research study focused on understanding how to treat lung cancer in patients diagnosed under the age of 40. In collaboration with epidemiologists at the University of Southern California and Ohio State University, a questionnaire was developed to assess any environmental exposure and health behaviors that may be responsible for the development of lung cancer in this population group. GO<sub>2</sub> is now building upon GoYLC with their most recent study: *Epidemiology of Young Lung Cancer (EoYLC)* study, which seeks to identify environmental, lifestyle, epigenetic, and genetic factors associated with YLC and specific driver somatic mutations. This will enable better treatments, support systems and detection rates. The BLF is pleased to continue its support of the GO<sub>2</sub> Foundation for Lung Cancer and wish them much success in their important research!

## THANK YOU AND GOODBYE TO BOARD MEMBERS AVA YAJIMA AND JEN BRAUN

**Ava Yajima** joined the BLF board in 2007. From the very beginning, Ava was deeply involved with the formation of the Foundation and key decisions that have led to its success. Ava has overseen all online donation processing, and was actively involved in the planning and execution of our yearly event. When Ava moved to Sacramento, she remained committed to the mission of the BLF. Ava was a close friend of Beth dating back to their days at UCLA. Ava was passionate about our grantees and making sure the Board stayed consistent with Beth's objectives and intentions. We will miss Ava on our Board!

**Jen Braun** joined the BLF board in 2009. Jen and Beth met through Ava Yajima while Beth was attending UCLA. They became good friends and remained so for over 17 years. Jen brought a wealth of marketing and social media experience to the Foundation. Jen managed the BLF website, published the annual summer newsletter and ran the BLF Facebook page. She was also actively involved in the planning and execution of our annual events – and was our "go to" expert for wine choices! Jen was willing to take on any task that needed to be done, and brought many creative ideas to the Board. She will be missed!





## LUCY AND NATHAN UPDATE

**From Lucy:** For me, the summer hasn't been too bad. I really like spending time with my family and my pets, Sargent and Newman. I talk to my friends on FaceTime and text every day to stay in touch. I like spending time reading, drawing and cooking.



Recently, I have been cooking my favorite foods such as matzo ball soup, cookies, and pasta. My absolute favorite thing to make is peanut butter cookies, which I baked for my dad on his birthday. At Gunn High School this year, I was in the school choir. We had a choir musical that was 50s themed, and that was definitely my favorite

part of the class. We were supposed to take a trip to New York City at the end of May, but unfortunately it was cancelled. I was also on the school swim team with a lot of my friends. I am looking forward to swimming for Gunn for the next three years. Outside of school, I am also involved in my synagogue youth group which meets monthly (now over Zoom). I like staying at home, but I look forward to the end of this because I want to see my friends and other important people in my life.

**From Nathan:** I started out my high school career at Gunn High School. I soon realized Gunn wasn't



working out for me. At the beginning of March, I started my new life at Squaw Valley Academy in Lake Tahoe. I have many friends there and the teachers are really good. There are 55 kids in the school, so everyone knows each other. I have started to pick up snowboarding again, and we do it every day!

Right now, I am in summer school. Squaw Valley Academy has been a really good change for me. I love waking up and walking to class while it's snowing outside. I have already improved academically, and I feel better mentally.

## UPDATE ON SCHOLARSHIP RECIPIENT DALIA LOPEZ

Dalia Lopez, the BLF's second college scholarship recipient, graduated with a degree in Chicana/o Studies and a Minor in Spanish grammar and writing from Cal State Dominguez Hills on May 2018. She shared, "College was the most wonderful experience. It helped me understand how to turn difficult situations into positive outcomes." The Beth Longwell Foundation scholarship gave her the opportunity to continue pursuing higher education and initiate her career. She shared, "Without their financial support, I would not be where I stand now."

After college she was accepted into Loyola's Immigration Justice Clinic as a legal assistant summer intern. This sparked her career in immigration law. Her first official job was working for Seaport Law Group in Redwood City, California. Soon after, she moved to Los Angeles, where she was able to help a larger Latino community. She worked at one of the most successful immigration firms, Los Angeles Immigration Attorneys in Downtown Los Angeles as a legal assistant. In March 2020, she was given a new opportunity to grow in her career and challenge her skills at another successful firm, The Matian Law firm, as an immigration paralegal. Her knowledge and love in immigration law continues to expand. She explains, "I want to become a bigger voice to the Latino community, not just as a paralegal, but as a future attorney. I want to give a special thanks to the Beth Longwell Foundation, their hard work has helped students, like me, achieve their dreams. Thank you once again."

### OUR 2020 GRANT RECIPIENTS

In 2020 the Foundation awarded grants to four Bay Area agencies. Recipients of Foundation grants exemplify Beth's visions and hopes for advancement in non-smoking lung cancer research, grief support for those who have lost a loved one, education, and the arts. The following are the Foundation's 2020 grant recipients:

*Alum Rock Counseling Center  
Community School of Music Arts  
GO2 Lung Cancer Foundation  
Kara*

